

**EDF**  
architecture  
EDU ARCHITECTURE INC.  
2800 Post Oak Boulevard  
Suite 300  
Houston, Texas 77056  
Tel: (713) 574-1700  
Fax: (713) 574-1800  
www.edfarchitecture.com  
BOCA, CALIFORNIA, NEW YORK

CODE DRAWING - PLAN - 24TH LEVEL  
3/32"=1'-0"

PROJECT "X"  
HOUSTON, TEXAS



ARCHITECTURE, MECHANICAL, ELECTRICAL, PLUMBING  
LICENSE NO. 121,100  
FROM CODE B.F. (44272-00)

DRAWN BY: C.B.G.

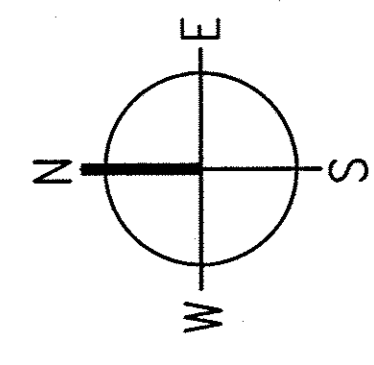
CHECKED: \_\_\_\_\_ DATE \_\_\_\_\_

REVISIONS: 07/20/2009

PROJECT NO: 07018.000  
ISSUED: FOUNDATION PERMIT  
ISSUED DATE: 07-18-07  
FILE:

DATE PLOTTED: 07/20/09  
ALL DIMENSIONS IN FEET  
DRAWING NUMBER

G014  
CODE PLAN

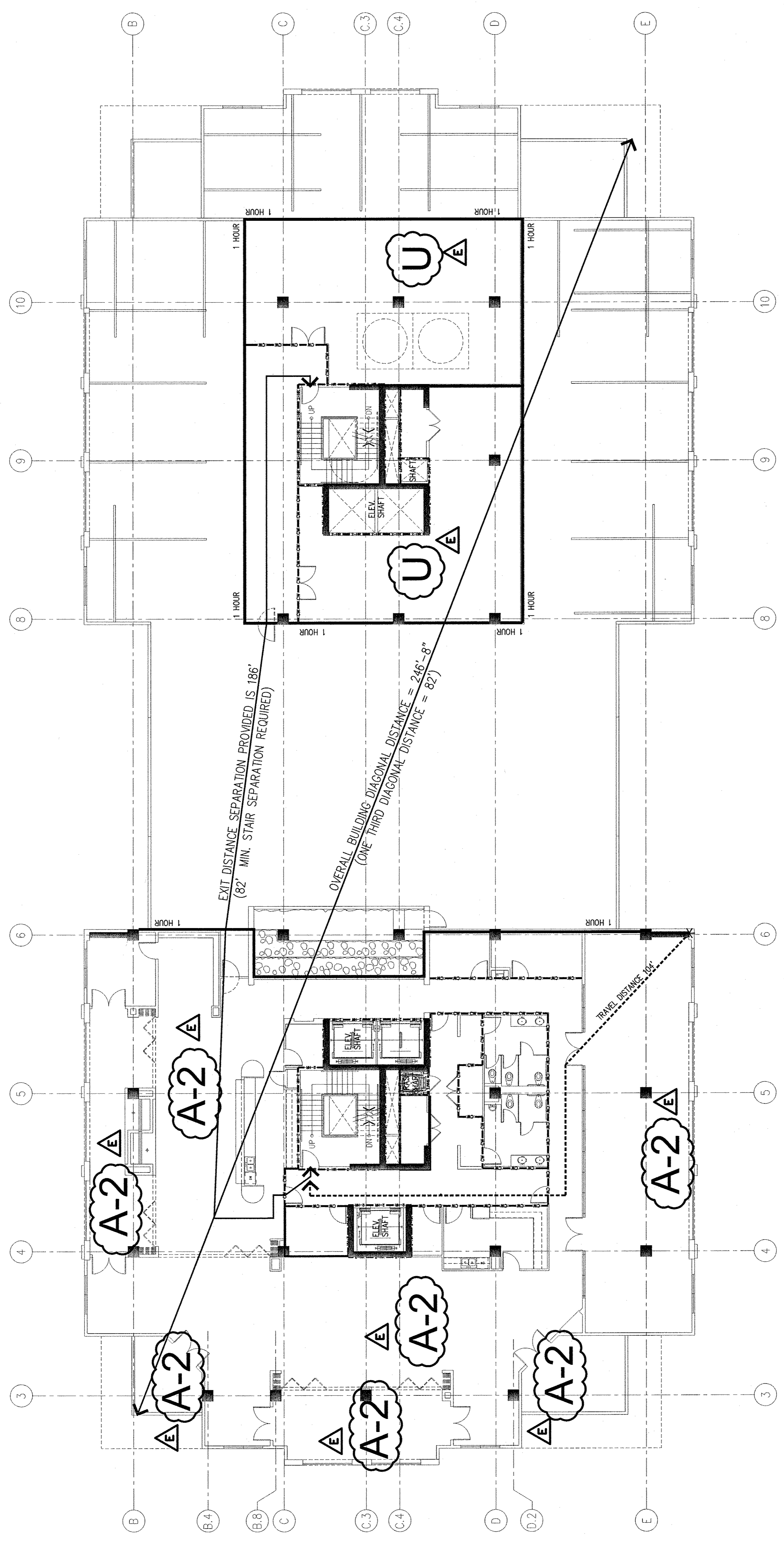


2 GENERAL NOTES

3 LEGEND

- EXTERIOR BEARING WALLS SHOWN ARE 3-HOUR MINIMUM RATED WALLS WITH UNPROTECTED OPENINGS PER TABLE 601.
- INTERIOR BEARING WALLS SHOWN ARE 2-HOUR MINIMUM RATED WALLS WITH UNPROTECTED OPENINGS PER TABLE 601.
- ALL EXTERIOR AND INTERIOR WALLS ARE OF NONCOMBUSTIBLE CONSTRUCTION.
- REFER TO BUILDING PLANS AND UNIT PLANS FOR PARTITION TYPES.
- TYPE 1A/SPRINKLERED CONSTRUCTION PER TABLES 503 & 601.
- REFER TO ELECTRICAL FOR LOCATIONS OF ILLUMINATED EXIT SIGNS.
- REFER TO ELECTRICAL FOR LOCATIONS OF FIRE ALARM PULL STATIONS AND FIRE ALARM DEVICES.
- REFER TO ELECTRICAL FOR LOCATIONS OF HEAT AND SMOKE DETECTORS.

- CORRIDOR WALLS: REQUIRED: 1/2 HOUR CORRIDOR WALL PER TABLE 710.1 WITH 20-MINUTE PROTECTED OPENINGS PER TABLE 710.3. PROVIDE: 1-HR UL WALL ASSEMBLY #A19 WITH 20 MIN. PROTECTED OPENINGS. RE: A0116
- EXIT WALLS: REQUIRED: 2 HOUR EXIT ENCLOSURE PER SECTION 710.1 WITH 90-MINUTE PROTECTED OPENINGS PER TABLE 710.3. PROVIDE: 2-HR UL WALL ASSEMBLY #A19 WITH 20 MIN. PROTECTED OPENINGS. RE: A0116
- SHAFT WALLS: REQUIRED: 2-HR UL WALL ASSEMBLY #A19 WITH 20 MIN. PROTECTED OPENINGS. RE: A0116
- SHAFT WALLS: REQUIRED: 2-HR UL WALL ASSEMBLY #A19B OR MIN. 2-HR CONCRETE SHAFT PER TABLE 712.1.1
- STRUCTURAL FRAME: REQUIRED: 3 HOUR STRUCTURAL FRAME PER TABLE 601
- UNIT SEPARATION WALL: REQUIRED: 1 HOUR INCLUDES UNIT SEPARATION WALL
- SEPARATION AT TRANSFORMER & WALL: REQUIRED: 4 HOURS PER POWER COMPANY REQUIREMENTS
- DAMPING WALLS: PROVIDED: 4-HR UL WALL ASSEMBLY #A19 WITH 2-HR MIN. PROTECTED OPENINGS. RE: A0114
- PROVIDE: 1-HR UL WALL ASSEMBLY #A19 WITH 20 MIN. PROTECTED OPENINGS. RE: A0116
- PROVIDE: 1-HR UL WALL ASSEMBLY #A19



CODE DRAWING - PLAN - 24TH LEVEL

(FOR REFERENCE ONLY)